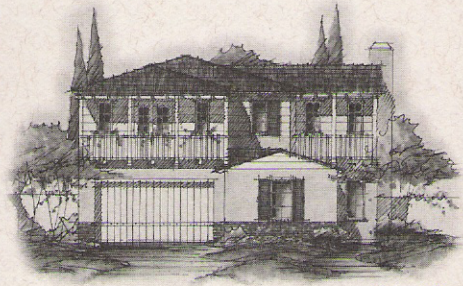




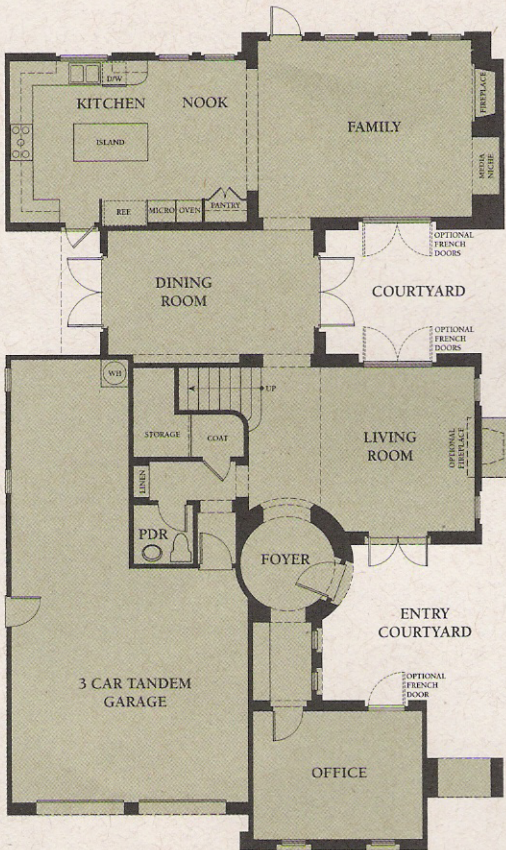
# Residence Three

*Preliminary Design*



*Artist's Rendering*

*Elevation Shown As Residence 3C:  
Traditional Monterey Architecture  
4 Bedrooms, 4 Baths, 3 Car Garage,  
Approximately 2,993 Square Feet*



**First Floor**

**A Variety Of Room Options Include:**

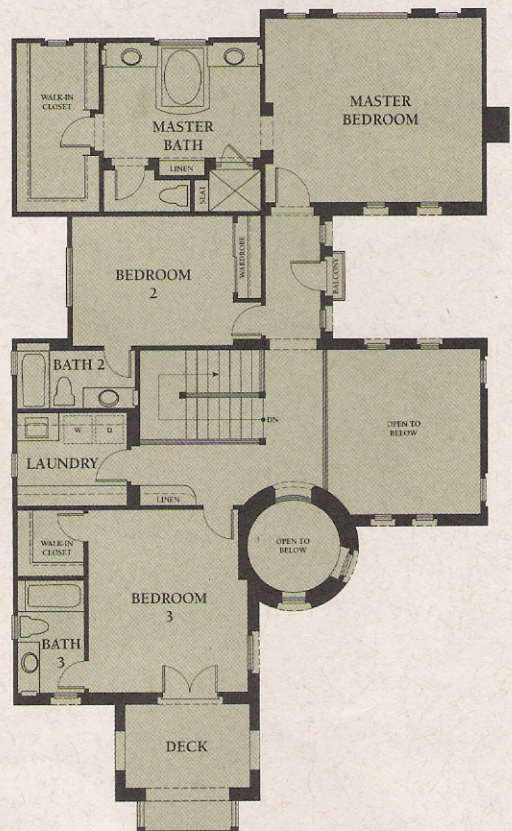
*Bedroom Four*

*Bedroom Five*

*Home Office*

*Study*

*Retreat At Bedroom Two*



**Second Floor**